



SUNCHASE

FUTURE LUXURY TOWN HOMES

SUNCHASE APARTMENTS

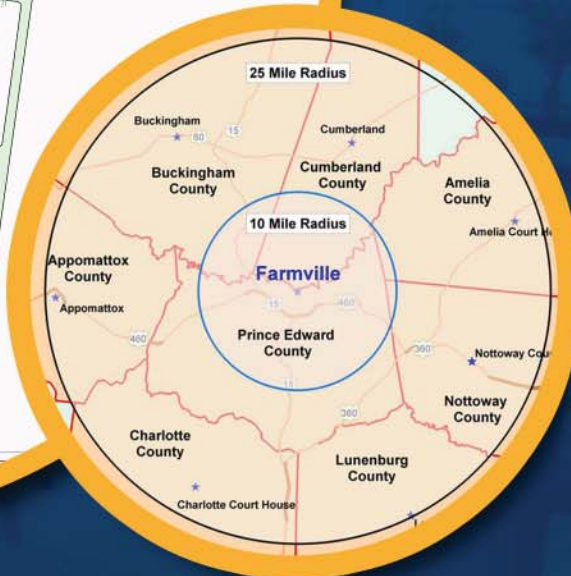
SUNCHASE OVERALL SITE PLAN

0 25 50 100 200



Key

1. SunChase Cinema 8
2. Retail - 21,600 sq. ft.
3. Plaza
4. Bank - 3,000 sq. ft.
5. Hampton Inn
6. Restaurant - 4,000 sq. ft.
7. Pharmacy - 14,000 sq. ft.
8. Destination Monument
9. Professional Offices
10. Clubhouse
11. Planned Sleep Inn



South Central Virginia's Most Exciting Mixed Use Development

For more information please email rcason@msc-rents.com
or call MSC Development (434) 977-4181 x115





Luxury Living at Affordable Prices!

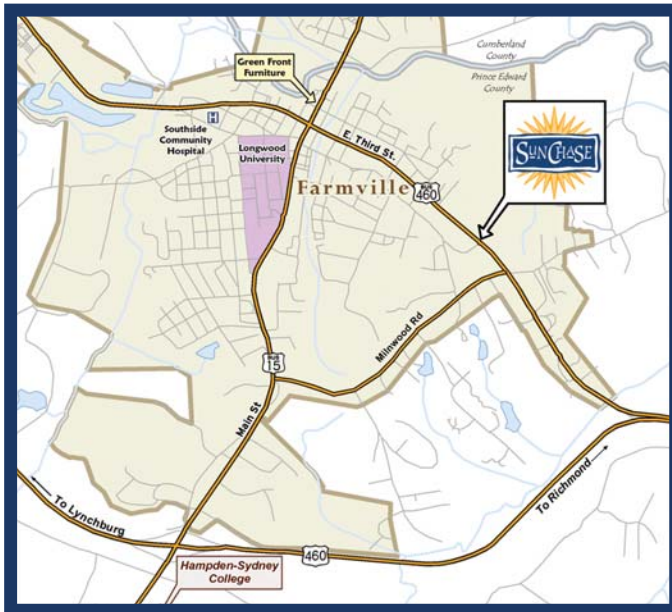
Introduction

The Town of Farmville serves as the economic hub for an eight county area in south central Virginia. Sunchase is well-positioned near downtown Farmville and Longwood University, and is convenient to the CENTRA Southside Community Hospital, and U.S. Route 460, the region's major east-west connector.

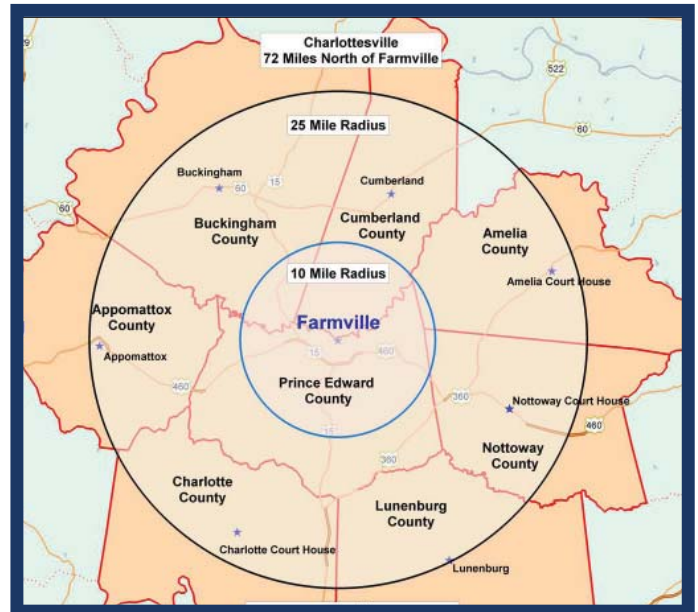
With the built in shopping, dining, and entertainment amenities at Sunchase, and its convenient location adjacent to the areas major employers, The Townes at Sunchase will be a tremendous success for an experienced builder.

We are pleased to offer The Townes at Sunchase, the next exciting phase of the Sunchase development, for sale either as finished lots or as development land with entitlements.

Map of Farmville



Area Map



Top Ten Employers in Farmville

1. Longwood University
2. Prince Edward Co. Schools
3. Centra Southside Community Hospital
4. Wal Mart
5. Hampden-Sydney College
6. ARA Services, Inc.
7. Holly Manor Nursing Home
8. Crossroads Services Board
9. Trinity Mission of Farmville (Nursing)
10. Piedmont Regional Jail

Source: Virginia Employment Commission 2008





Luxury Living at Affordable Prices!

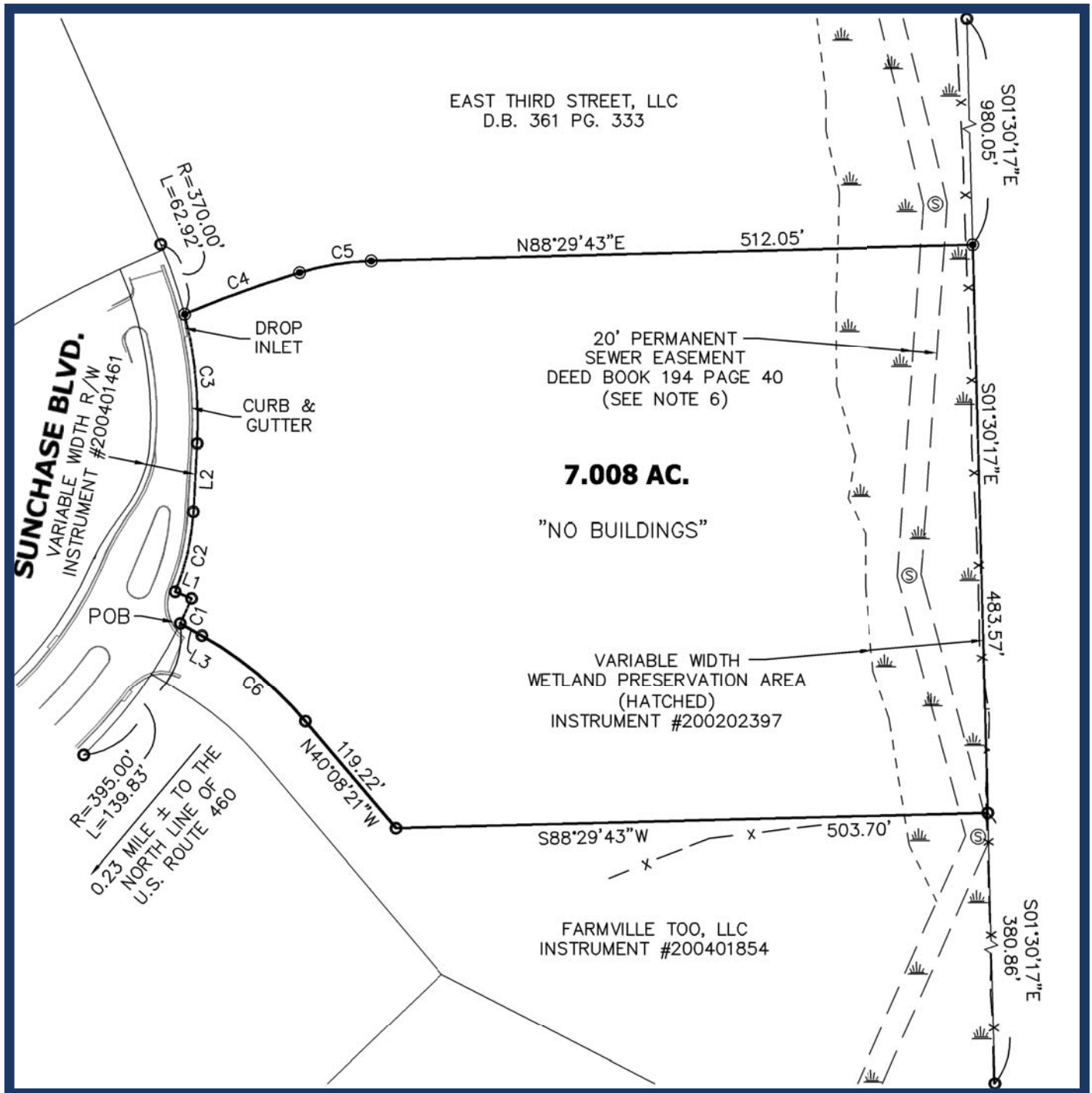
Sunchase Development





Luxury Living at Affordable Prices!

Survey Plat





Luxury Living at Affordable Prices!

Site Plan



The Townes at Sunchase (Phase I Details)

- 77 Townhome Lots
- Public Water and Sewer
- Footprints (as shown)
 - 20' x 40'
 - 24' x 36' (End Units)
- 7.008 Acres